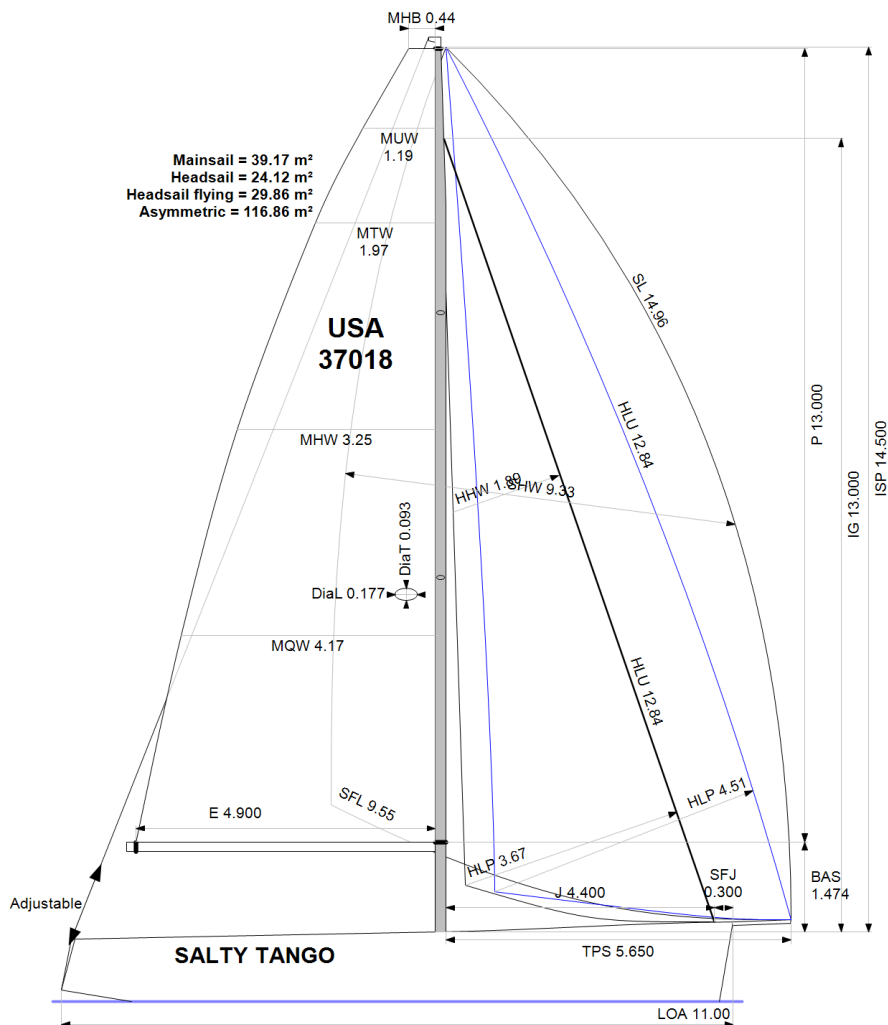


APH ToD: **521.3** CDL: **9.799**
APH ToT: **1.1510** CertNo: **USA37018**



BOAT

Class **Saffier Se37**
Designer **Satellite Yacht De**
Builder **Saffier Maritiem B**
Age date **01/2024**
Series date **01/2015**
Offset file **Saffier 37_DV.off**
Data file **USA 37018**

HULL

Length Overall **11.000 m**
Maximum Beam **3.442 m**
Draft **2.365 m**
Displacement **4,787 kg**
DLR **5.4749**
IMS Division **Performance**
Dynamic Allowance **0.000%**
Age Allowance **0.292%**

PROPELLER

Installation **Strut**
Type **Folding 2 blades**
Diameter **0.380m**

CREW

Maximum weight **300 kg** (declared)
Minimum weight **170 kg** *when applied
Non Manual Power **Sheets**
Crew Arm Extension

SAIL AREAS (m²)

	Measured	Rated
Mainsail	39.17	40.22
Headsail Luffed	24.12	24.12
Headsail Flying	29.86	42.23
Symmetric		
Asymmetric	116.86	116.86

(1 asymmetric(s) with SHW/SFL < 85%)

STORM SAIL AREAS (m²)

Trysail **11.15**
Storm Jib **8.77**
Heavy Weather Jib **23.67**

SAIL LIMITS

Headsails **6**
Spinnakers **5**

STABILITY

Righting Moment **N/A**
Stability Index **N/A**

The owner and any other person in charge is responsible that boat is complying with her certificate in accordance with RRS 78.1 and ORC Rule 304.

Rated boat velocities in knots

Wind Velocity	6 kt	8 kt	10 kt	12 kt	14 kt	16 kt	20 kt	24 kt
Beat Angles	43.8°	41.5°	39.2°	38.5°	37.6°	37.4°	37.3°	38.5°
Beat VMG	3.74	4.57	5.09	5.31	5.43	5.52	5.59	5.51
52°	5.73	6.80	7.33	7.52	7.62	7.69	7.79	7.78
60°	6.06	7.06	7.53	7.76	7.88	7.95	8.05	8.07
75°	6.32	7.23	7.71	8.04	8.26	8.40	8.57	8.64
90°	6.25	7.21	7.76	8.13	8.49	8.78	9.16	9.41
110°	6.03	7.21	7.85	8.28	8.72	9.17	9.94	10.50
120°	5.89	7.12	7.79	8.34	8.87	9.27	10.50	11.81
135°	5.23	6.59	7.47	8.04	8.60	9.24	11.01	12.89
150°	4.42	5.63	6.68	7.43	7.85	8.24	9.46	12.17
Run VMG	3.83	4.87	5.78	6.43	6.80	7.20	8.19	10.54
Gybe Angles	143.2°	146.9°	148.0°	150.2°	149.6°	172.1°	142.6°	142.0°



Time Allowances in secs/NM								
Wind Velocity	6 kt	8 kt	10 kt	12 kt	14 kt	16 kt	20 kt	24 kt
Beat VMG	963.5	787.1	706.8	678.5	663.2	652.5	644.1	653.1
52°	628.5	529.3	491.4	478.6	472.5	468.3	462.4	462.5
60°	593.7	510.0	477.8	464.2	457.0	452.6	447.4	446.0
75°	569.2	497.8	466.9	447.7	435.9	428.7	419.9	416.7
90°	575.8	499.2	464.2	442.7	424.1	409.8	392.9	382.6
110°	597.2	499.0	458.9	435.0	412.7	392.5	362.1	342.8
120°	611.2	505.9	461.9	431.6	406.0	388.3	342.7	304.8
135°	687.8	546.3	482.2	448.0	418.6	389.4	327.0	279.3
150°	814.7	639.7	539.1	484.8	458.4	436.8	380.7	295.8
Run VMG	940.8	738.7	622.5	559.7	529.3	499.8	439.6	341.6
Selected Courses								
Windward / Leeward	952.1	762.9	664.7	619.1	596.3	576.1	541.9	497.3
All purpose	729.6	598.4	535.6	505.0	486.0	470.2	442.2	415.6

Single Number Scoring Options		
Course	Time On Distance	Time On Time
Windward / Leeward	646.5	0.9281
All purpose	521.3	1.1510

Custom scoring options for United States of America

Scoring Option	TOD	TOT
Triple Number AP Low	664.0	0.9037
Triple Number AP Medium	518.3	1.1577
Triple Number AP High	463.7	1.2941
Triple Number Windward/Leeward Low	857.5	0.6997
Triple Number Windward/Leeward Medium	640.5	0.9367
Triple Number Windward/Leeward High	568.3	1.0557
Single Number Predominant Upwind	561.5	1.0685
Single Number Predominant Reaching	496.6	1.2083
Single Number Predominant Downwind	530.7	1.1307
Predominant Upwind - Low	729.0	0.8230
Predominant Upwind - Low/Med	611.7	0.9809
Predominant Upwind - Medium	546.7	1.0976
Predominant Upwind - Med/High	513.6	1.1682
Predominant Upwind - High	494.7	1.2130
Predominant Downwind Low	733.6	0.8179
Predominant Downwind Low/Med	597.0	1.0049
Predominant Downwind Medium	512.6	1.1706
Predominant Downwind Med/High	457.9	1.3104
Predominant Downwind High	412.5	1.4546
Predominant Reaching Low	650.3	0.9226
Predominant Reaching Low/Med	546.3	1.0984
Predominant Reaching Medium	483.6	1.2406
Predominant Reaching Med/High	442.3	1.3567
Predominant Reaching High	411.8	1.4569

Scoring Option	TOD	TOT
5-Band Windward/Leeward Low	909.2	0.6599
5-Band Windward/Leeward Low/Med	734.9	0.8164
5-Band Windward/Leeward Medium	631.2	0.9506
5-Band Windward/Leeward Med/High	577.4	1.0392
5-Band Windward/Leeward High	540.1	1.1109
Windward/Leeward 60-40 Low	912.1	0.6579
Windward/Leeward 60-40 Low/Med	741.7	0.8090
Windward/Leeward 60-40 Medium	642.4	0.9339
Windward/Leeward 60-40 Med/High	592.9	1.0119
Windward/Leeward 60-40 High	561.5	1.0685
5-Band AP Low	699.8	0.8574
5-Band AP Low/Med	581.8	1.0313
5-Band AP Medium	511.7	1.1725
5-Band AP Med/High	471.1	1.2737
5-Band AP High	442.5	1.3561
5-Band SF Bay Tour - Low	862.8	0.6954
5-Band SF Bay Tour - Low/Med	701.7	0.8550
5-Band SF Bay Tour - Medium	607.1	0.9883
5-Band SF Bay Tour - Med/High	557.1	1.0769
5-Band SF Bay Tour - High	522.8	1.1477
Chicago-Mac Upwind		1.0486
Chicago-Mac All Purpose		1.0789
Chicago-Mac Downwind		1.1141
Bayview-Mac Shore		1.0169
Harvest Moon Regatta	450.3	1.3323

SA/DSPL Upwind	22.17	SA/DSPL Downwind	54.65
----------------	-------	------------------	-------



Data in meters/kilograms (Metric)

HULL AND APPENDAGES (Lightship Trim)

Class	Saffier Se37	LOA	11.000	VCGD	-0.249
Measurement		Max. Beam	3.442	VCGM	-0.213
HIN		Draft	2.365	RM Rated (kg-m)	145.0
Plan review		Displacement	4,787	Limit of positive stability(°)	N/A
Hull construction	Cored	Wetted area	25.23	Stability Index	N/A
Carbon Rudder	No	IMS L	9.910	Default crew weight	646
Light stanchions	No	LSM0	9.561	Declared crew weight	300
Trim tab	No	Acc. length	11.000		
		Sink (kg/mm)	19.22		

PROPELLER

Propeller Type	Folding 2 blades						
Installation	Strut	PRD	0.380	EDL	0.570	ST3	0.180
Twin screw	No	PBW	0.108	ST1	0.050	ST4	0.112
Hydro generator	No	PIPA	0.0037	ST2	0.180	ST5	0.360

RIG

Forestay tension	Aft	P	13.000	E	4.900
Inner stay	None Fitted	IG	13.000	J	4.400
Mast material	Carbon	ISP	14.500	BAS	1.474
Single headsail furler	No	MDT1	0.093	FSD	Foil
Mainsail furler	No	MDL1	0.177	SFJ	0.300
Articulated bowsprit	No	MDT2		SPL	
Non-circular rigging	No	MDL2		WPL	
Fiber rigging	No	TL	Taper	TPS	5.650
Adjustable mast foot	No	MW	0.170	BD	0.153
Runners/Checkstays	0	GO	0.250	MWT	
Spreaders	2			MCG	
Rotating mast	No				

FLOTATION AND STABILITY

Calculation method	RM entered directly
RM entered	145.0
Flotation Date	25/05/2018



MAINSAIL

<i>Id</i>	<i>MHB</i>	<i>MUW</i>	<i>MTW</i>	<i>MHW</i>	<i>MQW</i>	<i>Area</i>	<i>Meas.Date</i>	<i>Comment</i>
MN	0.44	1.19	1.97	3.25	4.17	39.17	02/11/2023	ONL203638-001

HEADSAIL

<i>Id</i>	<i>HHB</i>	<i>HUW</i>	<i>HTW</i>	<i>HHW</i>	<i>HQW</i>	<i>HLP</i>	<i>HLU</i>	<i>Btn</i>	<i>Flying</i>	<i>FT</i>	<i>Area</i>	<i>Meas.Date</i>	<i>Comment</i>
108	0.08	0.63	1.22	2.36	3.47	4.51	12.84	Yes	Yes	0	29.86	26/10/2023	ONL203638-003
ST Jib	0.08	0.51	0.98	1.89	2.80	3.67	12.84	Yes	No		24.12	27/10/2023	ONL203638-002

ASYMMETRIC SPINNAKER

<i>Id</i>	<i>SLU</i>	<i>SLE</i>	<i>SL</i>	<i>SHW</i>	<i>SFL</i>	<i>Ratio</i>	<i>Area</i>	<i>Meas.Date</i>	<i>Comment</i>
A2	15.72	14.20	14.96	9.33	9.55	98%	116.86	12/07/2023	OUS155592-001
A3	15.29	13.39	14.34	8.27	8.47	98%	99.30	02/01/2024	173346
C0	14.47	13.34	13.91	5.99	7.94	75%	73.93	05/12/2023	OUS155592-002